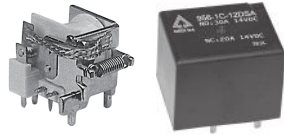


FEATURES特点

- European footprint and American footprint are both available.
欧规及美规端子可供选择.
- Standard type & High sensitivity type available.
有标准型及高感度型
- 1 Form A (SPST-NO) & 1 Form C (SPDT) arrangements.
1组常开及1组转换两种接点形式
- Open type (without dust cover) and Seal type which can protect the Relays form dust.
敞开型(无外盖)及封胶型皆供选择.
- Contact current maximum 30 ~ 40 Amp
最大接点电流 30 ~ 40 安培



用途：汽车灯载、中央门锁系统、直流马达控制。

CONTACT RATING 接点参数

Contact Form接点形式	1A SPST-NO	1C SPDT
Rating Load(Resistive)额定负载(阻性)	40A/14VDC	NO: 40A/14VDC NC: 20A/14VDC
Max. Switching Power最大切换功率	560 W	
Max. Switching Voltage最大切换电压	14VDC	
Min. Switching Current/Voltage 最小切换电流/电压	100mA 5VDC	
Contact Rating Current接点负载电流	40A	NO/ NC: 40A/20A
Max. Make Current最大浪涌电流	100A	NO/ NC: 100A/30A
Max. Break Current最大切换电流	40A	NO/ NC: 40A/30A
Contact Material接点材质	Ag Alloy银合金	

CHARACTERISTICS 性能参数

Electrical Life 电气寿命	1 × 10 ⁵	
Mechanical Life机械寿命	1 × 10 ⁷	
Insulation Resistance绝缘阻抗	Min. 100MΩ 500VDC	
Contact Resistance(Initial)接触电阻	≤ 100mΩ (6VDC 1A)	
Operate Time 动作时间	≤ 5ms	
Release Time 开放时间	≤ 4ms	
Initial Dielectric Strength 耐压	between open contacts开放接点间: 50/60Hz 1000VAC 1min. between contacts and coil接点线圈间: 50/60Hz 1500VAC 1min.	
Vibration Resistance 耐振动	Malfuction: 误动作:	10 ~ 55Hz Amplitude振幅 1.5mm
	Damage limits: 耐久:	10 ~ 55Hz Amplitude振幅 1.5mm
Shock Resistance 耐冲击	Malfuction: 误动作:	10G
	Damage limits: 耐久:	100G
Ambient Temperature环境温度	-40°C ~ +85°C (No freezing 无结冰)	
Unit Weight单位重量	Open type Approx. 敞开型约16g / Seal type approx. 封胶型约21g	

ORDERING INFORMATION 型号代码说明

956 H-1C-12-D S U
1 2 3 4 5 6 Z

<p>1. Model Number 型号</p> <p>2. Coil Sensitivity 线圈感度 Nil = Standard Type 标准型(约 1.6W) H = High Sensitive Type 高感度型(约 1.2W)</p> <p>3. Contact Arrangement 接点形式 1A = 1 Form A 1 组常开 1C = 1 Form C 1 组转换</p> <p>4. Coil Voltage 线圈电压 3、6、9、12、24VDC</p>	<p>5. Coil Type 线圈形式 D=DC 直流</p> <p>6. Enclosure 密封形式 Nil = Open Type 开放型(without Dust cover 无防尘外盖) S = Sealed Type 封胶型(with Dust cover 有防尘外盖)</p> <p>7. Terminal Type 端子形式 U = American footprint 美式端子脚 A = American different terminal 美式特规端子脚 E = European footprint 欧规端子脚</p>
--	---

COIL RATINGS (at 20°C) 线圈额定值 (在20°C)

COIL TYPE 线圈形式	Coil Nominal Voltage 线圈额定电压 (V)	Coil Resistance 线圈阻抗 ($\Omega \pm 10\%$)	Pick-Up Voltage 动作电压(V) (Max)	Drop-Out Voltage 开放电压(V) (Min)	Nominal Current 额定电流 (mA)
DC Standard Coils 直流标准线圈 (abt. 1.6W)	3	5.6	1.7	0.3	533.3
	6	22.5	3.4	0.6	266.7
	12	90	6.8	1.2	133.3
	24	360	13.6	2.4	66.7
DC High Sensitive Coils 直流高感度线圈 (abt. 1.2W)	6	30	4.5	0.6	200
	9	67.5	6.75	0.9	133.3
	12	120	9	1.2	100
	24	480	18	2.4	50

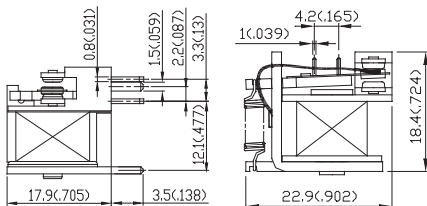
* Max Continuous Voltage at 20° C: 110% of Coil Normal Voltage.
最大使用电压在20°C:线圈额定电压的110%。

OUTLINE DIMENSIONS 外部尺寸

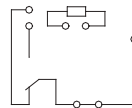
UNIT: mm(inch) 单位: 毫米(英寸)

OPEN TYPE 开放型 EUROPE 欧规

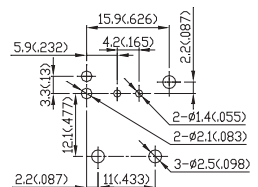
Dimensions 尺寸



Internal Connections 内部连接
(Bottom View 底视图)

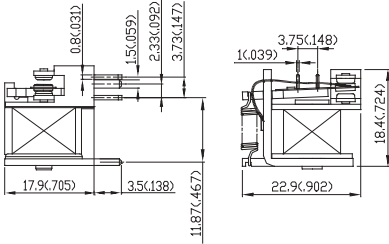


Drilling Plan 孔位图
(Bottom View 底视图)

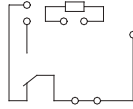


U.S.A. 美规

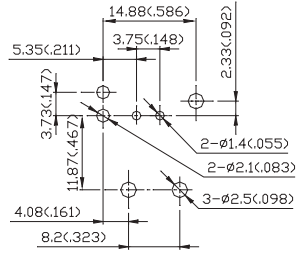
Dimensions尺寸



Internal Connections内部连接
(Bottom View底视图)

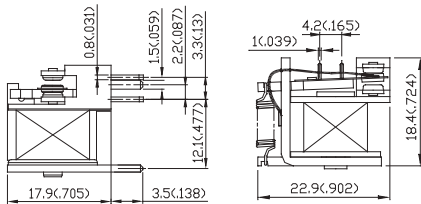


Drilling Plan孔位图
(Bottom View底视图)

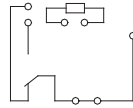


U.S.A. different terminal 美式特规

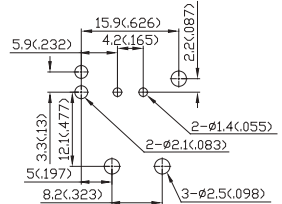
Dimensions尺寸



Internal Connections内部连接
(Bottom View底视图)

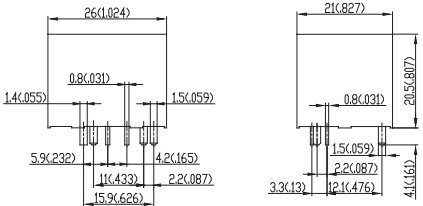


Drilling Plan孔位图
(Bottom View底视图)

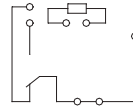


SEALED TYPE 密封型 EUROPE 欧规

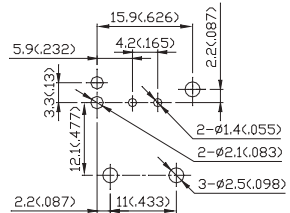
Dimensions尺寸



Internal Connections内部连接
(Bottom View底视图)



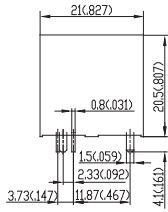
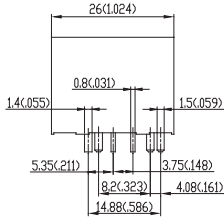
Drilling Plan孔位图
(Bottom View底视图)



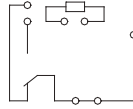
REMARK: Dimensions $\leq 5\text{mm} \pm 0.2\text{mm}$, $> 5\text{mm} \pm 0.3\text{mm}$, the tolerance of PCB thru hole: $+0.2\text{mm}$
备注: 尺寸公差 $\leq 5\text{mm} \pm 0.2\text{mm}$, $> 5\text{mm} \pm 0.3\text{mm}$, 印刷电路板孔 $+0.2\text{mm}$

U.S.A. 美规

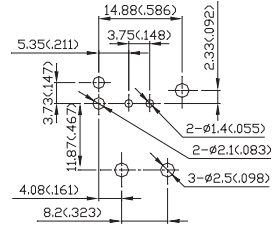
Dimensions尺寸



Internal Connections内部连接
(Bottom View底视图)

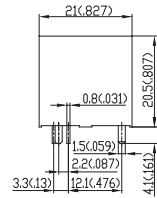
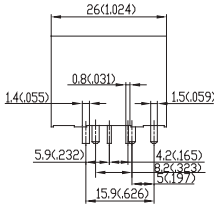


Drilling Plan孔位图
(Bottom View底视图)

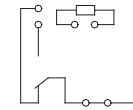


U.S.A. different terminal 美式特规

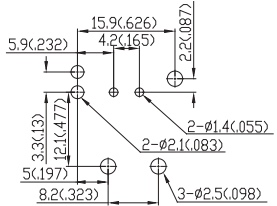
Dimensions尺寸



Internal Connections内部连接
(Bottom View底视图)



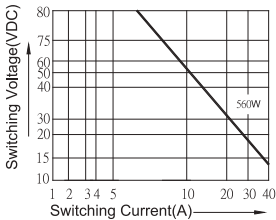
Drilling Plan孔位图
(Bottom View底视图)



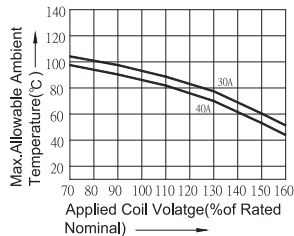
REMARK: Dimensions $\leq 5\text{mm} \pm 0.2\text{mm}$, $> 5\text{mm} \pm 0.3\text{mm}$, the tolerance of PCB thru hole: $+0.2\text{mm}$
备注: 尺寸公差 $\leq 5\text{mm} \pm 0.2\text{mm}$, $> 5\text{mm} \pm 0.3\text{mm}$, 印刷电路板孔 $+0.2\text{mm}$

956 Reference Data 参考资料

Limiting Curve For Power Load



Ambient Temperature VS Coil Voltage for continuous duty



Assumptions: 1. Thermal resistance = 45° per watt
2. Nominal coil resistance
3. Curves are based on 1.6watts at 20°C

AMBIENT TEMPERATURE VS. COIL VOLTAGE FOR CONTINUOUS DUTY
持续使用时, 环境温度与线圈电压对比